



Be  
welcomed  
**HOME**  
in  
*Style*



# WHY CHOOSE

BRADNAM'S

*Signature*

ENTRANCE  
DOOR

MADE FROM  
**ALUMINIUM**



## Ease of Installation

- Frames and Sash do not require painting or staining
- There's no need to hang the sash into the frame
- Fitting of Hinges and Strike is not required



## Low Maintenance

- No rotting or delaminating
- Won't warp or bow
- No need to re-paint or varnish



## Versatile Styling

- Wide range of frame and glass colours
- Stylish handle options
- Multiple designs and configurations available



## Weather Resistant

- Suitable in exposed weather conditions<sup>1</sup>
- Cyclone-rated<sup>1</sup>

<sup>1</sup> Not applicable to some lock and sill combinations





# MORE features to *Love*

---

Day snib ensures the door stays closed from the inside without using a key

---

Your choice of Standard, Low and No Sill

---

Wide range of optional screening solutions available<sup>2</sup>

---

Built-in 'Draught Guard' for doors with a low or no sill to protect against draughts, dust and insects

---

Optional upgrade to the 'one key solution' – the key to all Capital Glass Windows & Doors alike<sup>3</sup>

---

Fully compliant with relevant Australian Standards

---

<sup>2</sup> Doors with offset handles are not screenable

<sup>3</sup> Excludes vent locks and cam handles

# SASH DESIGNS

for any *Style*

Add a personalised touch to any door with Capital Glass Sash Designs.

Include glass panels alongside the elegant VJ panels to elevate your simple door design in an instant.

Sashes can be used to provide a touch of elegance with vertical or horizontal panes, add avenues of natural light to your foyer, or even complete a stunning Hamptons façade.



- 4 The width of the door will determine the number of VJ panels.
- 5 Available in single glazed only.
- 6 Glass panels must be the same size. Some designs will only be available as single glazed depending on the size of the glass panels.



**EVJ**  
SERIES<sup>4</sup>



EVJ1



EVJ1



**EVGVJ**  
SERIES<sup>5</sup>



E1VGVJ

Glass Width = 100mm



E2VGVJ





**EVG**  
SERIES<sup>®</sup>



**EHG**  
SERIES<sup>®</sup>



**HAMPTON**  
SERIES<sup>®</sup>



E3VG



E5VG



E4HG



E6HG



HM1

# CONFIGURATIONS

for any *Lifestyle*

Just as practical as they are elegant, Capital Glass Signature Entrance Doors come in multiple forms to suit every lifestyle.

Available in refined single sash and sophisticated double sash configurations, this selection integrates with any home.

Add accompanying Fixed Windows alongside to instantly transform your door into a grand entryway.

# CUSTOMISE

with *Colour*

Available in shades of grey, beige, white, cream and black – the Signature Entrance Door can effortlessly blend into your home's façade, or turn heads as a statement piece.

To find out more about the different powder coat finishes including our timber-look finish, consult our nearest showroom.

## SINGLE SASH CONFIGURATIONS

*E1VGVJ design shown*



## DOUBLE SASH CONFIGURATIONS



# HARDWARE *Options*

Our Signature Entrance Door is available in various handle colours, for customisation down to every last detail.

## HANDLE COLOUR OPTIONS

Black	White
Classic Chrome	Shadow Chrome

**Important Note:** The smart lock includes a keypad and two IC cards, with the option to purchase additional cards as necessary. A smartphone App is necessary to configure and operate the lock via Bluetooth. A separate additional purchase of a Wi-Fi gateway is needed to access the smart lock remotely.

Offset handles are not screenable.

LEVER HANDLE

INLINE HANDLE  
WITH KEY LOCK

INLINE HANDLE  
WITH SMART LOCK

OFFSET HANDLE  
WITH KEY LOCK

OFFSET HANDLE  
WITH SMART LOCK



External handles shown



## SECURE your Entryway

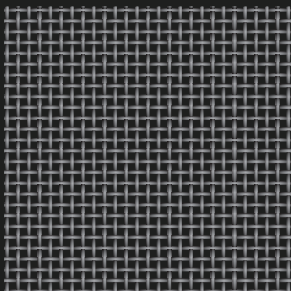
If security is your top priority, you can't look past our **Stainless View™** or **Ali View™** screens<sup>2</sup>, designed to complement our Signature Entrance Doors.

With superior strength mesh and fixing system, they provide robust protection against would-be intruders without impeding your view.

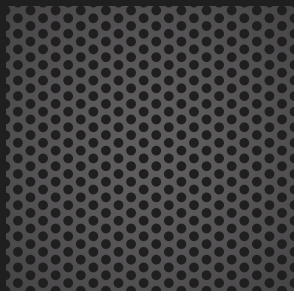
Both products are carefully tested for resistance against knives, forcible impact, jemmying and other threats.

They are designed to protect you, your home, your family and your possessions.

**Stainless View™** mesh  
is made from T316 marine  
grade stainless steel.



**Ali View™** mesh  
is made from perforated  
aluminium panels.



<sup>2</sup> Doors with offset handles are not screenable

<sup>7</sup> standard sill only

### Technical Data

Max door height	2407mm
Max door width	1904mm
Max sash width	1200mm
Maximum water rating – single door	235Pa <sup>7</sup>
Maximum water rating – double door	200Pa <sup>7</sup>
Maximum wind rating	3200Pa ULS
Maximum bushfire rating	BAL 40



55 Supply Road, Bentley Park, QLD 4869

[www.capitalglassandaluminium.com.au](http://www.capitalglassandaluminium.com.au)

LICENSED MANUFACTURER OF



WINDOWS & DOORS

SECURITY SCREENS

SHOWER SCREENS

SLIDING WARDROBE DOORS

GLASS SPLASHBACKS

Product availability, pricing, features, options, sizes, configurations and performance are subject to regional variations, design requirements and building codes.

Images are for illustration purposes only and may not accurately represent the product. Capital Glass & Aluminium reserves the right to change, alter or delete any aspect of this product without notice.

We recommend visiting the Capital showroom before ordering to view colour swatches, glass samples and actual products.