



Capital

# DOUBLE HUNG WINDOWS

A modern refinement of a classic look

# Double Hung Window Range

Our **double hung windows** are a long-standing customer favourite. Double hung windows allow you to enjoy the benefits of natural light and air in any context in your home, including areas with limited opening spaces. They are secure, easy to operate and available in various sizes and configurations.

## Essential Double Hung Windows

If opening space or pedestrian safety is a concern, you can't look past our '**Essential**' double hung windows. Available in large-size panels, they have easily-adjustable top and bottom hung sashes, giving you complete control over their position at any time. Balancing ventilation-control with superior weather-proofing, they can be installed in various spaces and configurations.

## Signature CB Double Hung Windows

Our premium '**Signature Counter Balanced**' double hung windows are robust, secure, stylish and easy to operate. Their unique counterbalanced system uses one sash's weight to counter the other's weight. You'd be forgiven for mistaking them for regular horizontal sliding windows. With high-quality handles, frame colours to suit every home and optional screen installation. They are the premium, must-have adaptation of this classic window style.

# Performance Parameters

	Essential	Signature CB
Frame size	52mm	100mm
Maximum window height	2100mm	2450mm
Maximum window width	3010mm	3690mm
Maximum panel width	900mm	1230mm
Maximum panel weight	22kg	42kg
Maximum water rating	450Pa	600Pa
Maximum wind rating	4500Pa ULS	6000Pa ULS
Maximum glass thickness (single glazed)	6.76mm	12.76mm
Maximum glass thickness (double glazed)	N/A	20mm
Maximum acoustic rating	Rw32	Rw35
Maximum bushfire rating	BAL 40	BAL 40
Lowest U-value (single glazed)	4.3	4.8
Lowest U-value (double glazed)	N/A	3.4

**Note:** To ensure optimal performance, window openings may be restricted based on size and configurations. Performance figures are independent of each other and subject to conditions. Contact a Capital Glass & Aluminium representative to discuss your specific project requirements.

# Features & Benefits

Essential . Signature CB

## Lifestyle & Comfort

- Ergonomic and easy-to-use handle
- Direct fresh air into your home through the top, bottom or both ends of the window at once

### Optional

- Wide range of screening solutions are available
- Key lockable handle for extra security
- Keys can be 'keyed alike' with Capital's doors for convenience\*
- Openings can be restricted for upper storey windows

## Design & Aesthetic

- Available in a range of lifestyle configurations
- Curtain-friendly design protects window furnishings from damage
- Combine with fixed windows to create a feature wall

### Optional

- Create a Hamptons look with colonial bars

## Performance & Reliability

- Fully compliant with relevant Australian Standards
- High-quality seals provide superior protection against the elements

### Optional

- Reduce outside noise by incorporating our Sound Smart system
- Suitable for cyclonic regions
- Bushfire rated – certified up to BAL 40

\* Excludes patio bolts and commercial hinged & pivot doors

## + Premium Features

### Signature CB Only

- Save on electricity bills with optional double glazing
- Top and bottom sashes open simultaneously for convenient and easy operation
- Architectural symmetry with other Capital windows and doors



## Feel the Signature Counter Balanced Difference

### IMPROVED OPERATION

#### CONVENIENCE

Top and bottom sashes open simultaneously

#### EASY MOVEMENT

The weight of one sash counters the weight of the other sash



### BETTER CONTROL OF AIR FLOW

Warm air moves through the upper opening

Cooler air travels largely through the lower sash



# Hardware

The hardware displayed on this page are a guide only. Capital recommend the viewing of an actual hardware product prior to order.

Black Gloss

White

Ultra Silver

ESSENTIAL

•

•

•

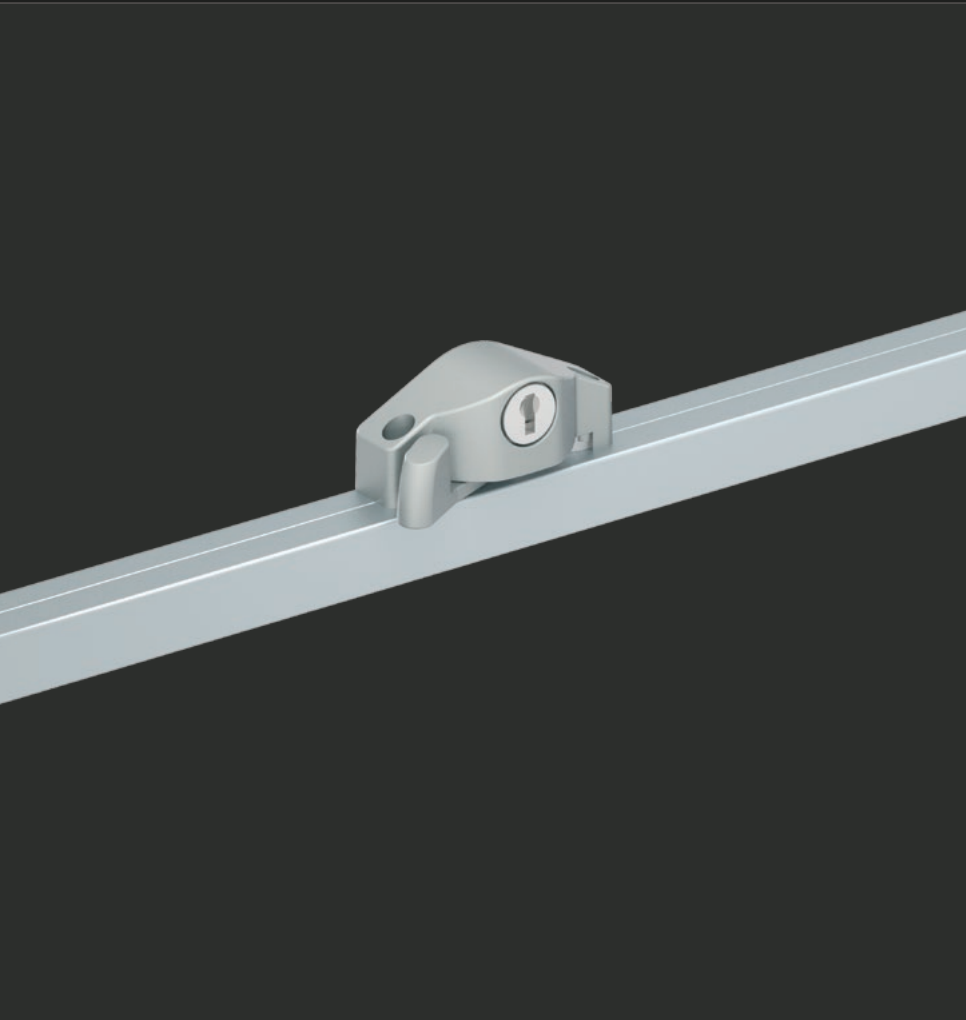
SIGNATURE CB

•

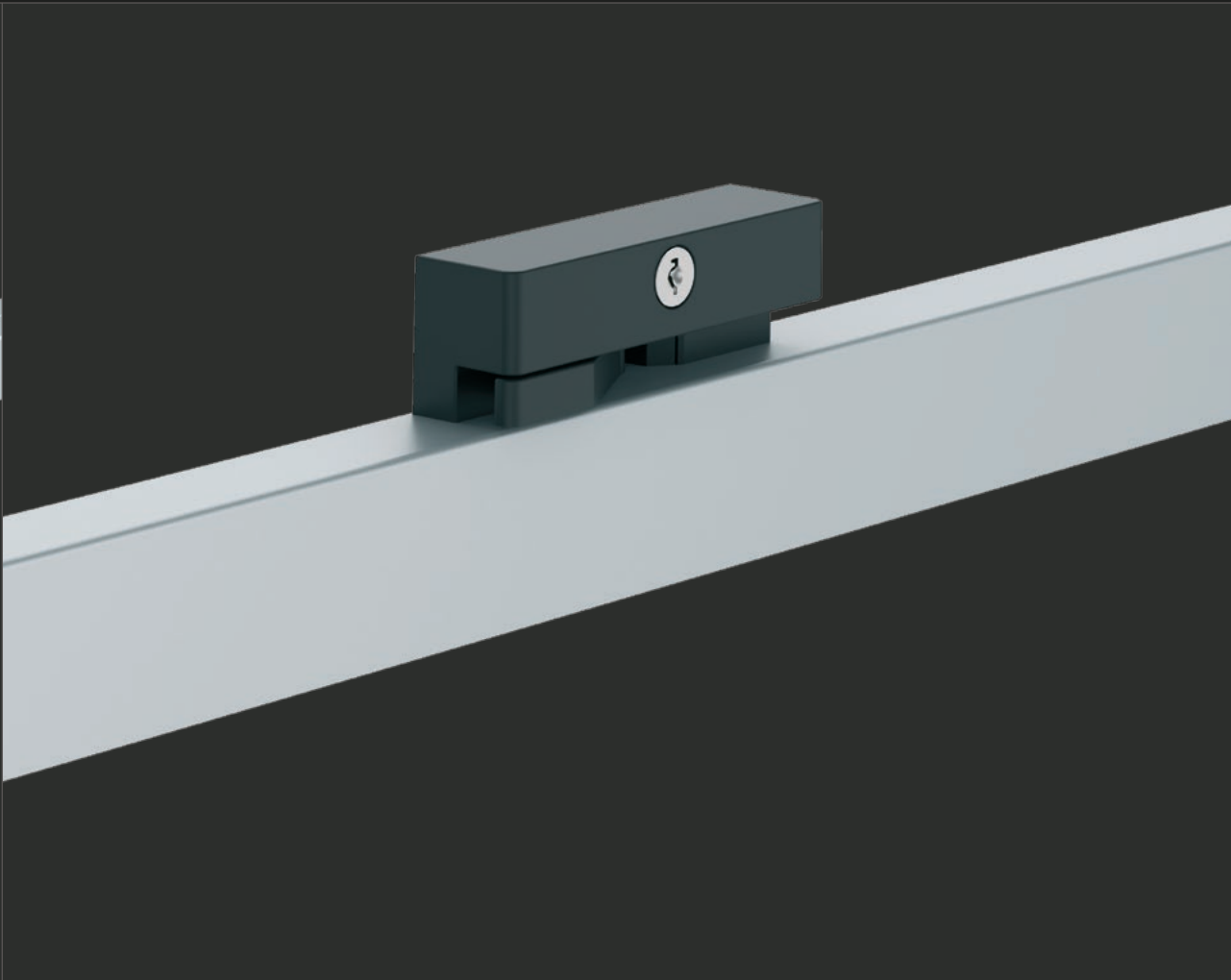
•

•

ESSENTIAL



SIGNATURE CB





# Smart Solutions

High Performance Windows and Doors

Building in today's environment demands the need to satisfy energy efficiency, acoustics, security and bushfire requirements. Capital's **Smart Solutions** range is designed to augment all Essential and Signature products to satisfy these needs.

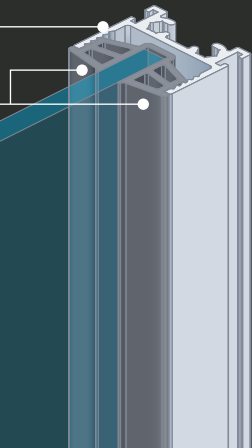
## Some of the possible benefits

- Cooler in Summer
- Warmer in Winter
- Enhanced UV protection
- Reduce outside noise
- Save on energy bills
- Added security

## Performance comes from more than just glass

Superior frame assembly

High performance seals



Essential . Signature CB



As the market leader in Australia for aluminium and glass building products, Capital have developed its range of **Smart Solutions** to meet all high-performance requirements.

## Premium Smart Solution

### Double Glazed\*

#### Year-round Comfort

- Acts as extra insulation by limiting the flow of hot or cold air in and out of your home
- Helps maintain comfortable temperatures inside across all seasons

#### Energy Reduction

- Reduce reliance on air conditioning and heaters – lowering electricity bills
- Consume less energy for a smaller carbon footprint

#### Noise Reduction

- Minimise outside noise – creating a quiet haven inside your home

#### Safety

- Extra strong resistance to unwanted attacks by intruders

\* Not available in Essential

## Climate Control Solutions

### Solar Comfort™

#### Year-round Comfort

- Designed to reflect heat away in summer and keep heat inside during winter
- Enjoy the ideal temperature in your home all year round – cooler in summer, warmer in winter

#### Energy Reduction

- Keep power bills down by reducing the need for additional heating and cooling
- Help save the environment by consuming less energy

### Solar Block™

#### Cooler in Summer

- Minimise the flow of heat into your home – enjoy summer without feeling the heat
- Acts like a pair of sunglasses for your home, reducing glare by up to 78%

#### Energy Reduction

- Save on electricity bills by reducing the need for air conditioners
- Minimise your carbon footprint by consuming less energy

## Specialty Solutions

### Safety\*

#### Safety

- Effective, affordable barrier against forced entry
- Enjoy peace of mind knowing that your home has extra protection

### Sound Smart™

#### Noise Reduction

- Reduce unwanted external noise – nearby traffic or noisy neighbours,

### FlameShield™

#### Superior Bushfire Protection

- Meets Australian Standard AS3959:2009, which is aimed to reduce the risk of loss of life and property in bushfire prone areas



55 Supply Road, Bentley Park, QLD 4869

[www.capitalglassandaluminium.com.au](http://www.capitalglassandaluminium.com.au)

LICENSED MANUFACTURER OF



WINDOWS & DOORS

SECURITY SCREENS

SHOWER SCREENS

SLIDING WARDROBE DOORS

GLASS SPLASHBACKS

Product availability, pricing, features, options, sizes, configurations and performance are subject to regional variations, design requirements and building codes.

Images are for illustration purposes only and may not accurately represent the product. Capital Glass & Aluminium reserves the right to change, alter or delete any aspect of this product without notice.

We recommend visiting the Capital showroom before ordering to view colour swatches, glass samples and actual products.

© Capital Glass and Aluminium . v1 Nov 2022